

PAOLA
LENTI



ERES THE SPIRIT OF NATURE

LINEN

Used for over 4,000 years

It does not require irrigation
rainwater is sufficient

Produced in Europe from organic plantations
by CO2 Neutral companies

The fabric is certified *Master of Linen*



HEMP

A resistant fiber that absorbs humidity

Its cultivation does not require chemicals

Produced in Europe from organic plantations
by CO2 Neutral companies

The fabric is certified *Master of Hemp*





IGUSA

The rush used for the production of tatami

It interacts with the environment, in which it is inserted, absorbing the humidity of the air and releasing it when the environment is dry

Natural flame retardant

Resistant to stain



ABACA

A flexible and versatile fiber

Resistant to atmospheric agents and sea water

Its cultivation requires a low exploitation of the land
and reduces the risk of soil erosion

BAMBOO

A fast and spontaneous growing plant

It absorbs 40% more CO₂ than other plants

Its cultivation does not require chemicals

Robust and versatile

Natural flame resistant



Fabrics in their natural colour



or in a palette of soft hues





Knits, cords and braids in a natural colour





or in coordinated hues matching the fabrics







ERES COLLECTION



Frei | Francesco Rota











Frei | Francesco Rota



Cerchi | Nicolò Morales

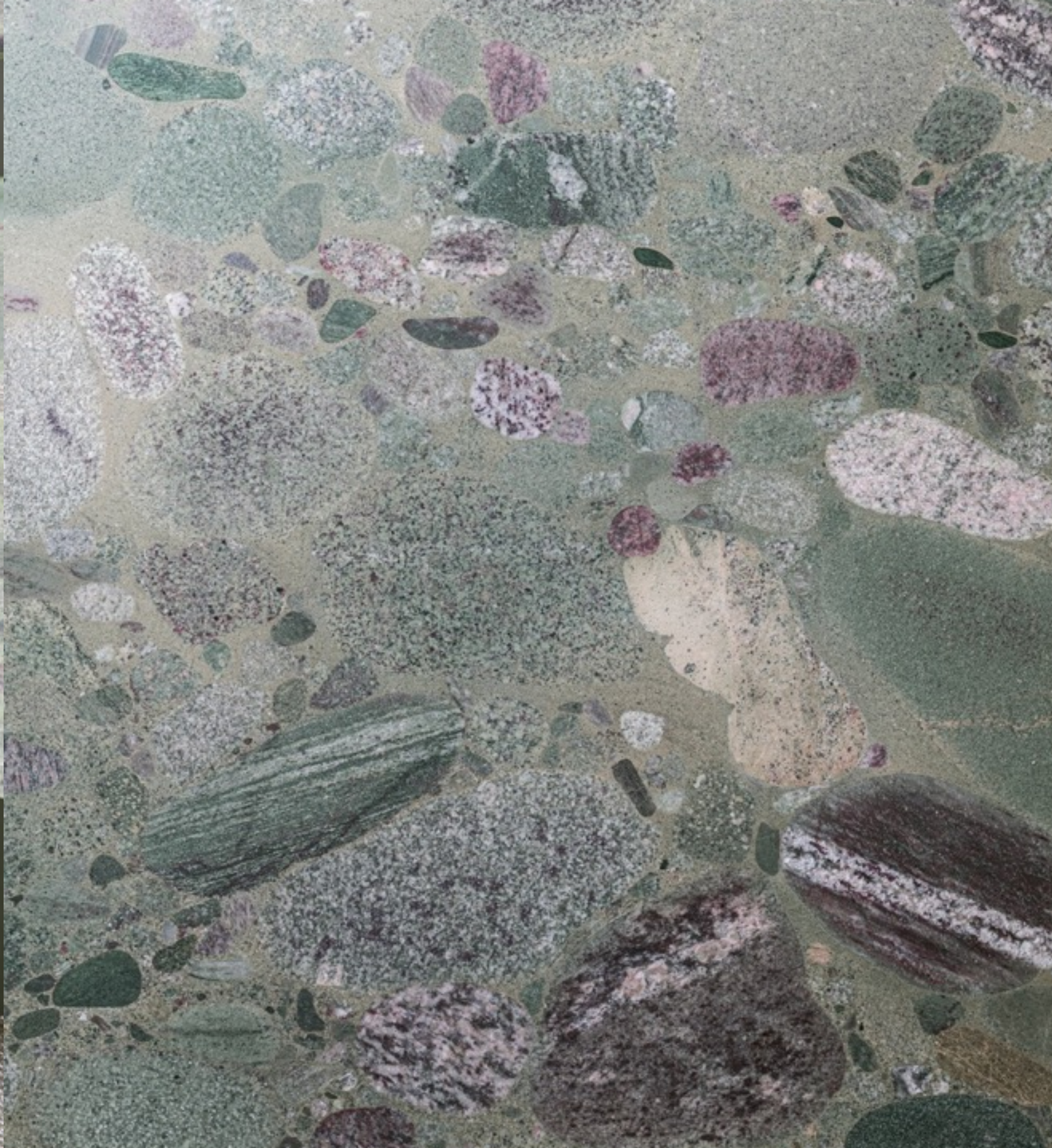






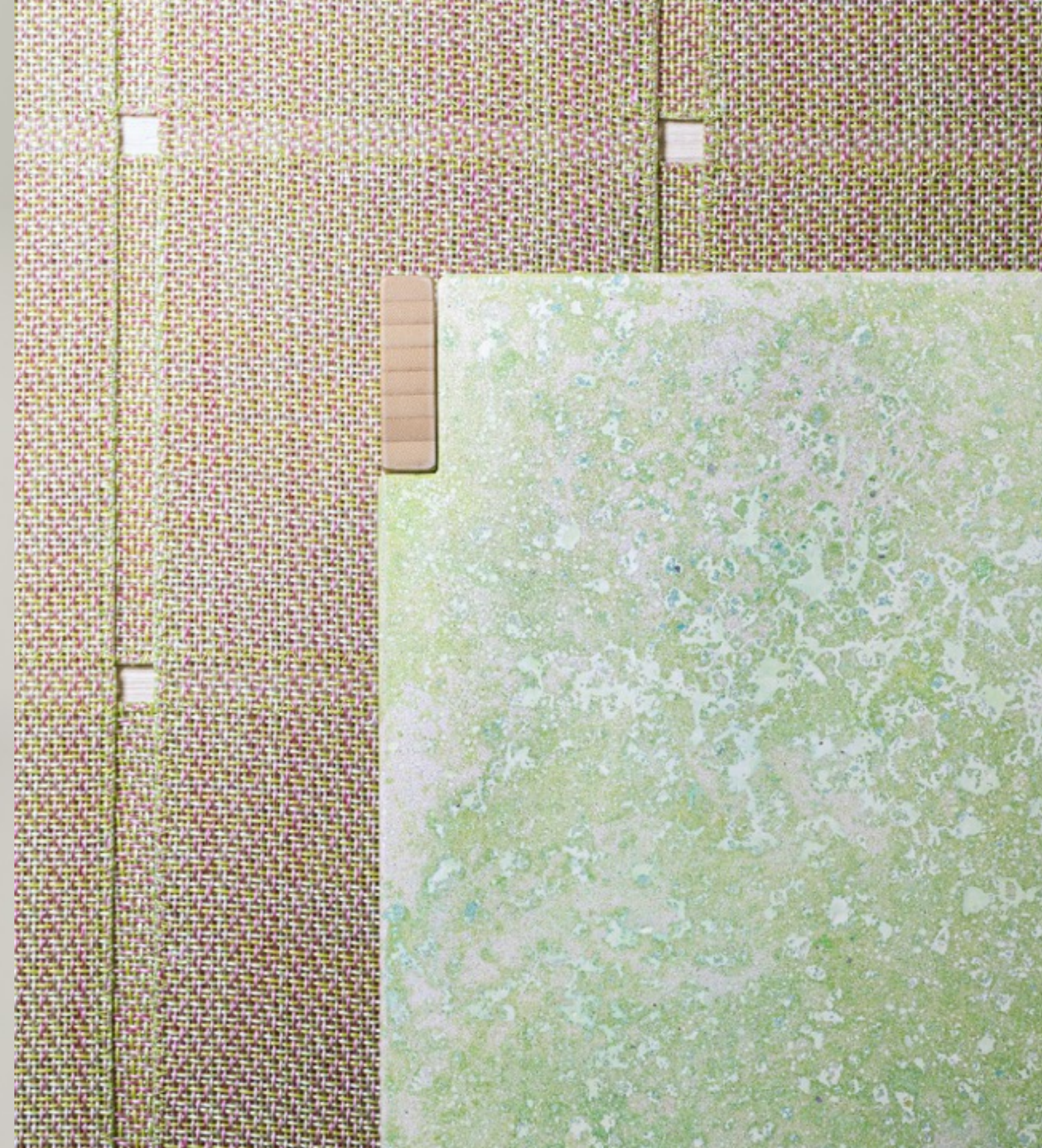


Isole | Marella Ferrera









Frei | Francesco Rota



Wabi | Francesco Rota







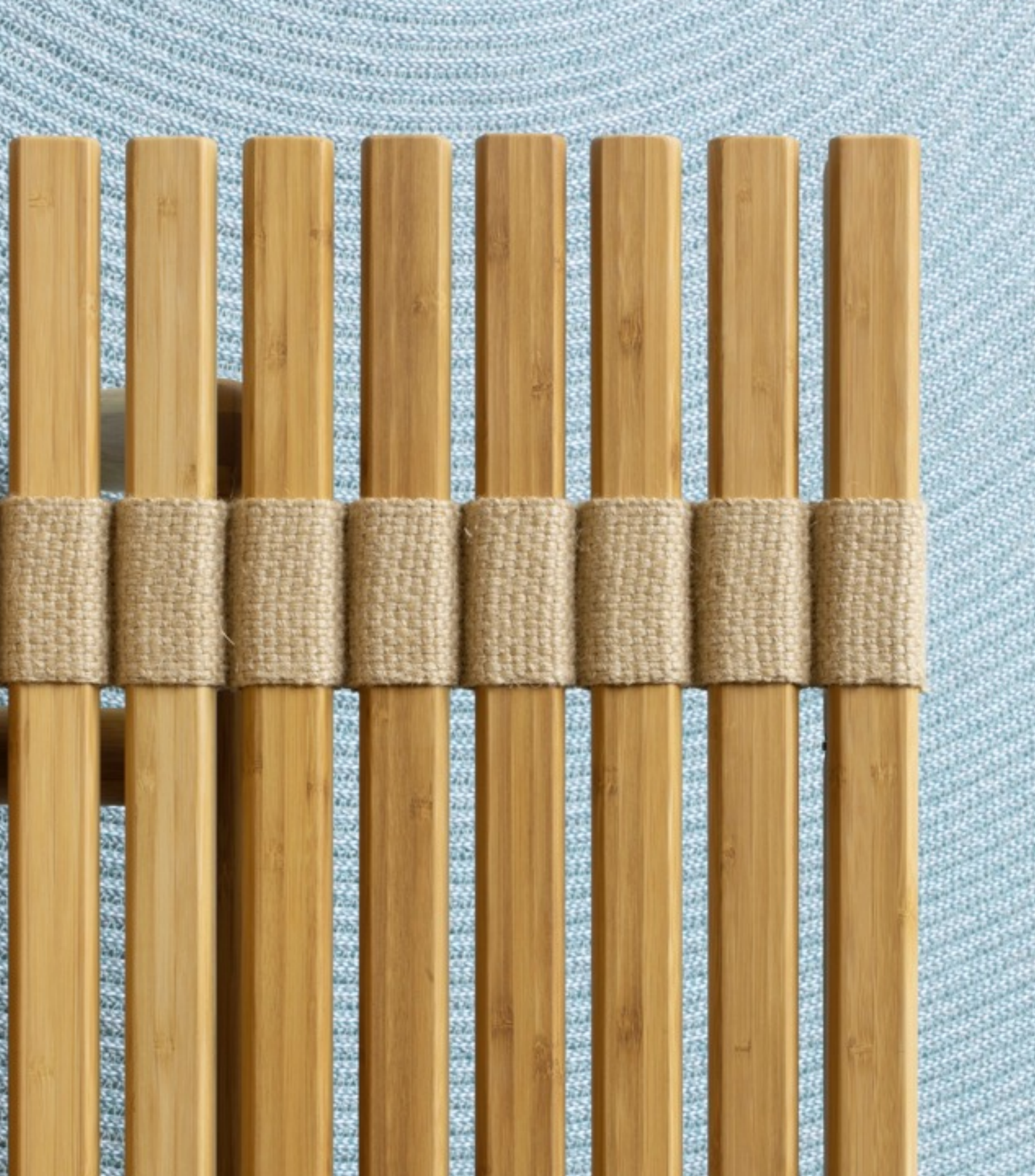








Shibui | Francesco Rota





Duvè | Paola Lenti CRS

















Shibui | Francesco Rota











A collection of friendly furniture and objects that will bear the traces of use and time

The refusal of chemical treatment of the materials imply a higher care of the furniture that must be protected from the direct exposition to the elements

The Eres collection is therefore intended for outdoor but covered areas

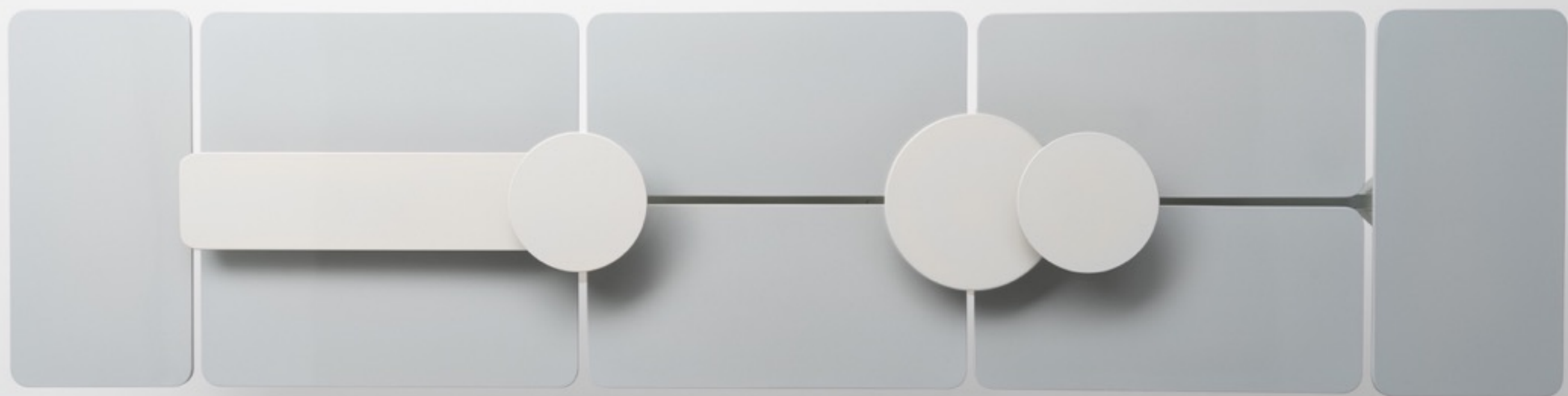
A close-up, soft-focus photograph of a pink lotus flower in bloom, with its petals showing delicate textures and vibrant pink hues. The flower is the central focus, surrounded by other blurred lotus flowers and buds, creating a dreamy, ethereal atmosphere. The lighting is soft and natural, highlighting the delicate structure of the petals.

ERES THE SPIRIT OF NATURE

AQUA COLLECTION



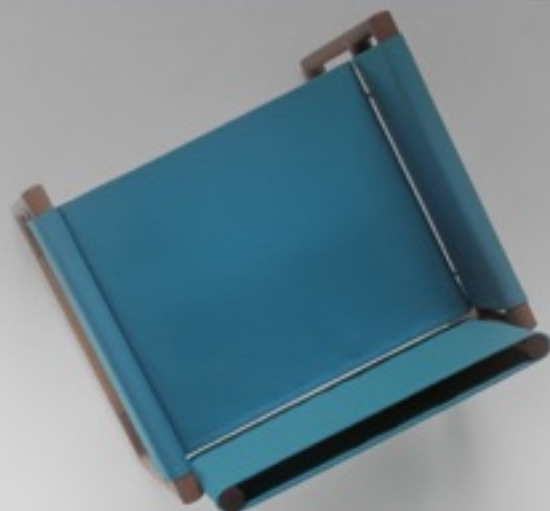
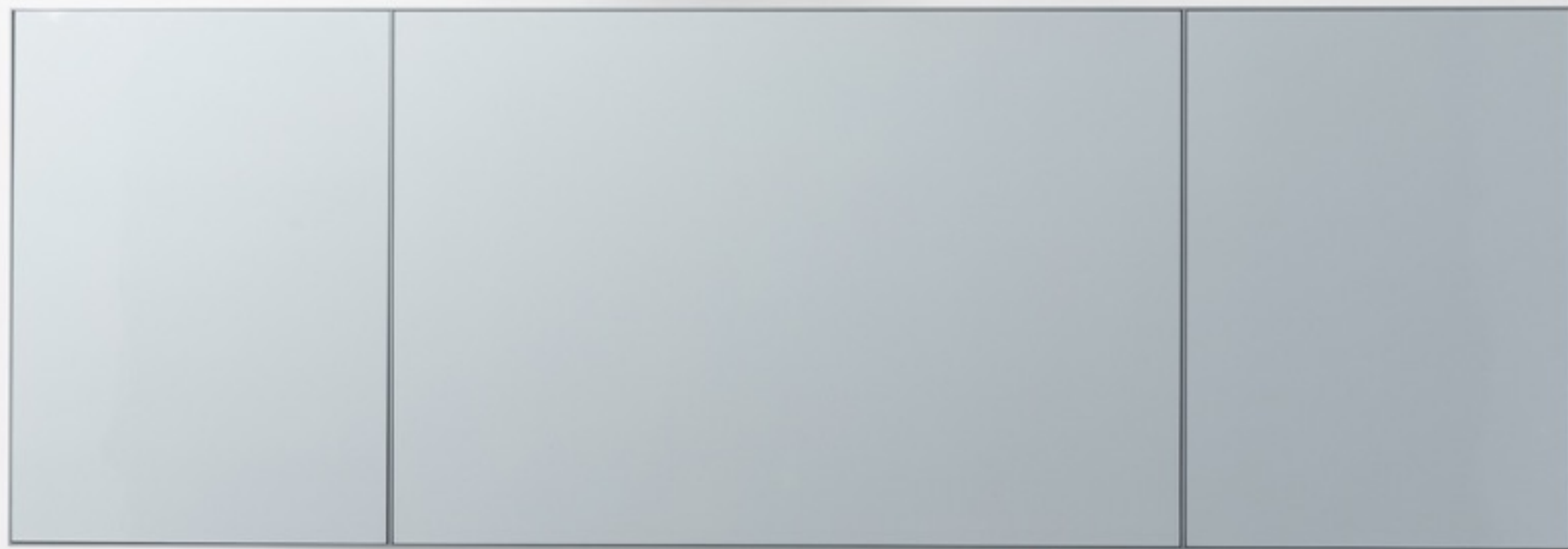
Altopiano | Robin Rizzini

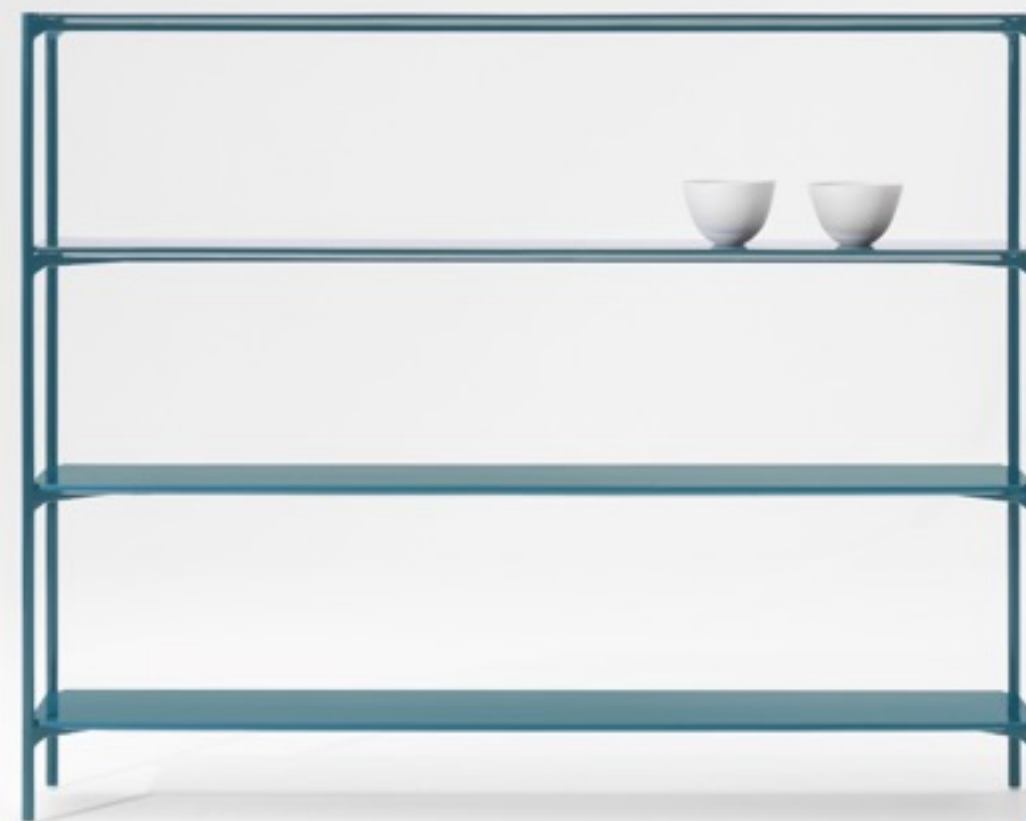






Portofino | Vincent Van Duysen





Plano | Francesco Rota



PAOLA
LENTI